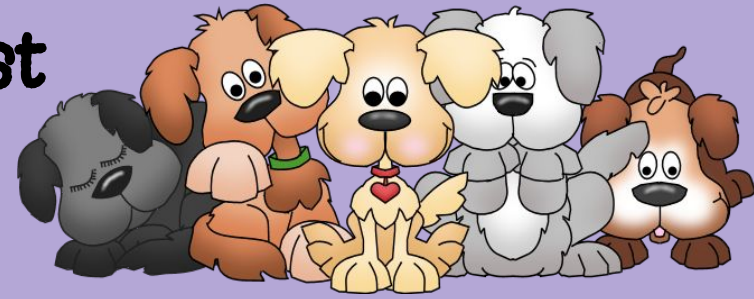




February 26th - March 1st



## MATH

- ★ We will finish Equivalent Fractions
- ★ We will begin comparing Fractions.
- ★ We will identify patterns and complete patterns.

Vocabulary to Know:

- 1.numerator
- 2.denominator
- 3.equivalent
- 4.benchmark fraction

## Google Apps

- ★ We will animate a Google Slide.
- ★ We will complete the February Artland.

## IMPORTANT REMINDERS:

- ★ Please continue to check the Daily Folder and Planner for important information !
- ★ Vocabulary Parade - Friday, March 1st 

# Mrs. Wilson's LESSON PLANS

Week of February 26th - March 1st

\*Lesson Plans are Subject to Change\*



	<b>MONDAY</b> February 26th 3 C Comfy Day	<b>TUESDAY</b> February 27th 4 A Crazy Sock Day	<b>WEDNESDAY</b> February 28th 5 B Green Day	<b>THURSDAY</b> February 29th 6 C Colorful Day	<b>FRIDAY</b> March 1st 1 A Vocab Parade
MATH	O:TSWBAT -Define vocabulary related to fractions -Generate Equivalent Fractions with Multiplication and Division A: ★ Mad Minutes ★ POTD ★ Fraction Vocab Review ★ Equivalent Fractions E: student responses	O:TSWBAT -Define vocabulary related to fractions -Generate Equivalent Fractions with Multiplication and Division A: ★ Mad Minutes ★ POTD ★ Fraction Vocab Review ★ Equivalent Fractions E: student responses	O:TSWBAT -Define vocabulary related to fractions -Generate Equivalent Fractions with Multiplication and Division A: ★ Mad Minutes ★ POTD ★ Fraction Vocab Review ★ Equivalent Fractions E: student responses	O:TSWBAT -Define vocabulary related to fractions -Compare Fractions A: ★ Mad Minutes ★ POTD ★ Fraction Vocabulary Review ★ Comparing Fractions E: student responses  <b>Leap Day Activities</b>	O:TSWBAT -Define vocabulary related to fractions -Compare Fractions A: ★ Mad Minutes ★ POTD ★ Fraction Vocabulary Review ★ Comparing Fractions E: student responses
Extra/Google Apps	O:TSWBAT -gain understanding of Google Apps. -review division. A: ★ Finish Division riddle ★ Animate a Google Slide E: student responses	O:TSWBAT -gain understanding of Google Apps. -review division. A: ★ Finish Division riddle ★ Animate a Google Slide E: student responses	O:TSWBAT -gain understanding of Google Apps. -review division. A: ★ Finish Division riddle ★ Animate a Google Slide E: student responses	O:TSWBAT -gain understanding of Google Apps. -Identify patterns A: ★ Patterns ★ Animate a Google Slide E: student responses	O:TSWBAT -gain understanding of Google Apps. -Identify patterns A: ★ Patterns ★ Animate a Google Slide E: student responses  <b>Vocabulary Parade</b>

\*Lesson Plans meet requirements of the Rockwood Area School District Curriculum & PA State Standards for 4th Grade.

\*Accommodations & Modifications included but not limited to: follow IEPs & GIEPS, differentiated instruction, preferential seating, opportunities for intervention or enrichment, & challenge activities at teacher's discretion.